

Nottingham Crime and Drugs Partnership

Respect Survey 2013 Summary Findings

Methodology & Sampling

- (i) Face-to-face Interviews
- (i) Random Sample of 2700 city residents
- (i) Representative of all wards and deprivation levels in the city
- (i) The final data set from the survey was weighted to correct for the disproportionate sampling scheme used. The data was weighted to the 2011 census on ward, and age and gender at ward level.
- (i) NB: Last year's results have been re-weighted in line with the new census data

Margin of Error, Confidence Intervals and Confidence Level

City-wide = +/- 2% (interval of 4%)

Ward = +/-10% (interval of 20%)(approx)

Arboretum = +/- 4% (interval of 8%)

Dunkirk and Lenton = +/- 4% (interval of 8%)

Confidence level is usually reported at 95%

i.e. 5% chance that the data collected in the sample just by random chance has abnormally high or low values that don't represent the population

Overall Feel From the Survey

- Things continue to improve
- Almost all types of ASB have seen a statistically significant improvement
- Lowest levels of ASB
- Highest level of confidence in the Police and Council

Perceptions of ASB

Unprompted ASB Issues

- 70% 'No Comments'
- 30% had something to say...
 - 13% Noise/ Loud Music
 - 10% Drug use/dealing

Who causes ASB? (%)

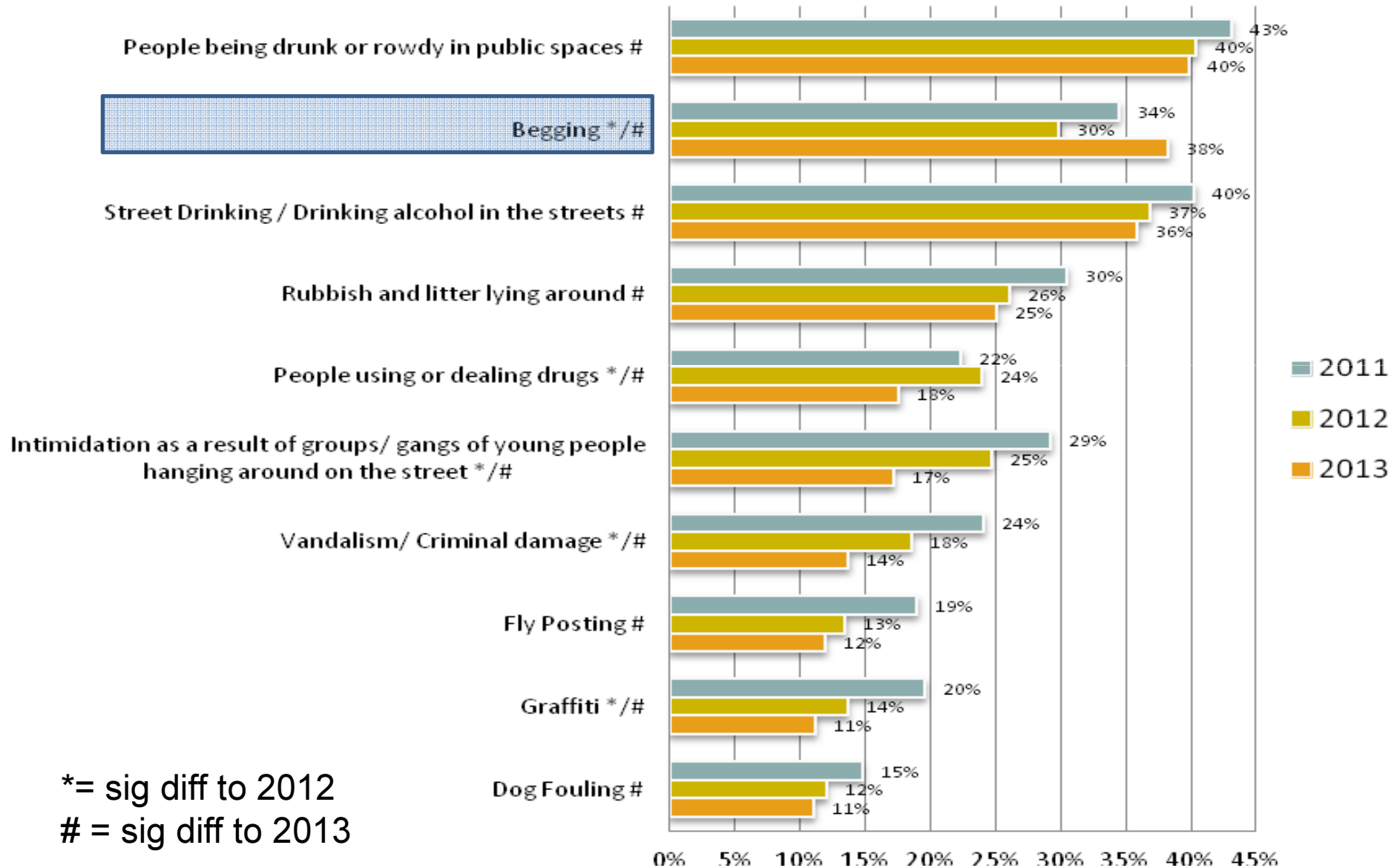
Respect for Nottingham 2013



	Citywide	Arboretum	Dunkirk and Lenton
Student Sample	18%	42%	69%
Those who thought Students caused ASB			
All residents	12%	18%	55%
Non-students		17%	65%
Students		19%	44%

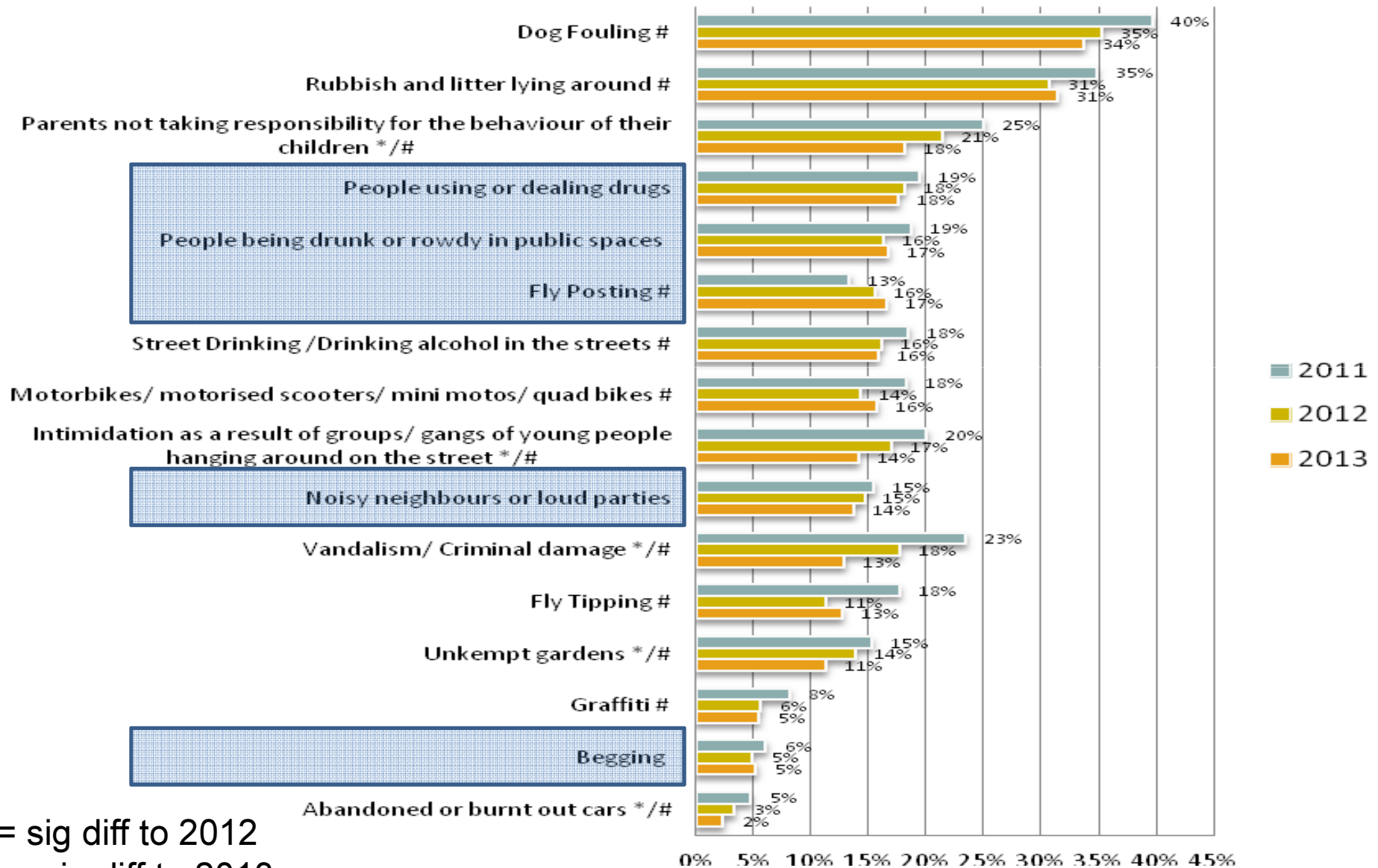
0.0% 5.0% 10.0% 15.0% 20.0% 25.0%

Perceptions of ASB in the City Centre by year (very or fairly big problem) (%)



*= sig diff to 2012
 # = sig diff to 2013

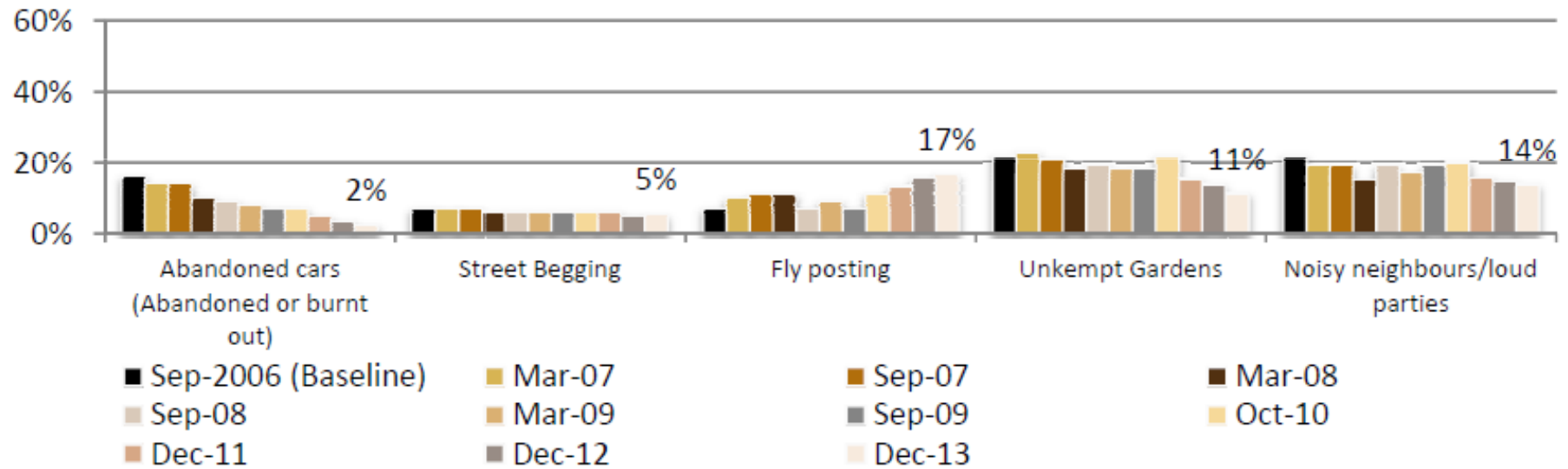
Perceptions of Anti-Social Behaviour in Local Neighbourhood by Year (very or fairly big problem) - (%)



*= sig diff to 2012
 # = sig diff to 2013

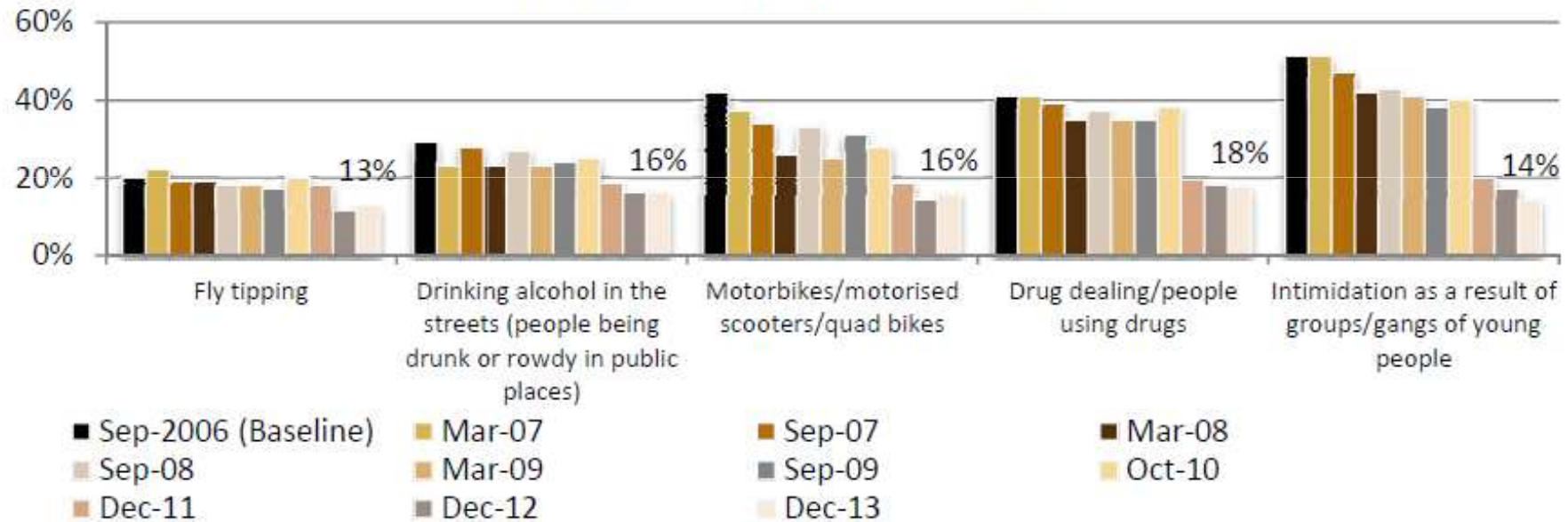
Change in ASB over time

Perceptions of Anti-Social Behaviour Issues in Local Area Over Time
(very or fairly big problems) - (%)



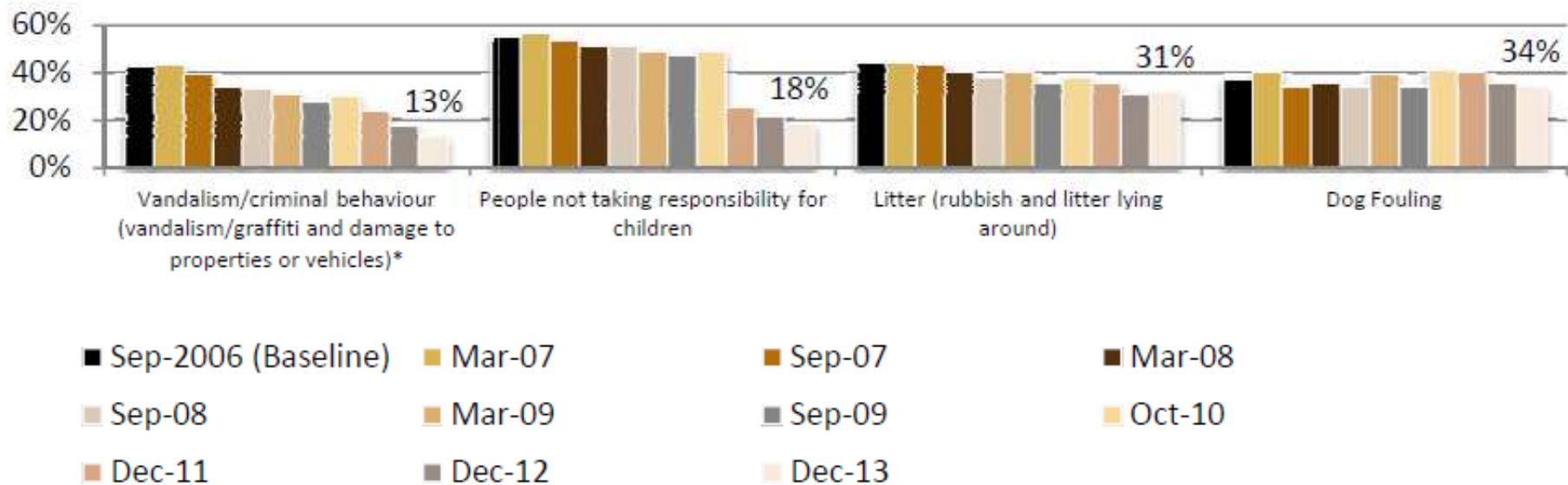
Change in ASB over time

Perceptions of Anti-Social Behaviour Issues in Local Area Over Time
(very or fairly big problems) - (%)



Change in ASB over time

Perceptions of Anti-Social Behaviour Issues in Local Area over Time (very or fairly big problems) - (%)



Change in ASB over time (NI 17)

- Noisy neighbours or loud parties
- Teenagers hanging around on the streets
- Rubbish or litter lying around
- Vandalism, graffiti and other deliberate damage to property or vehicles
- People using or dealing drugs
- People being drunk or rowdy in public places
- Abandoned or burnt out cars

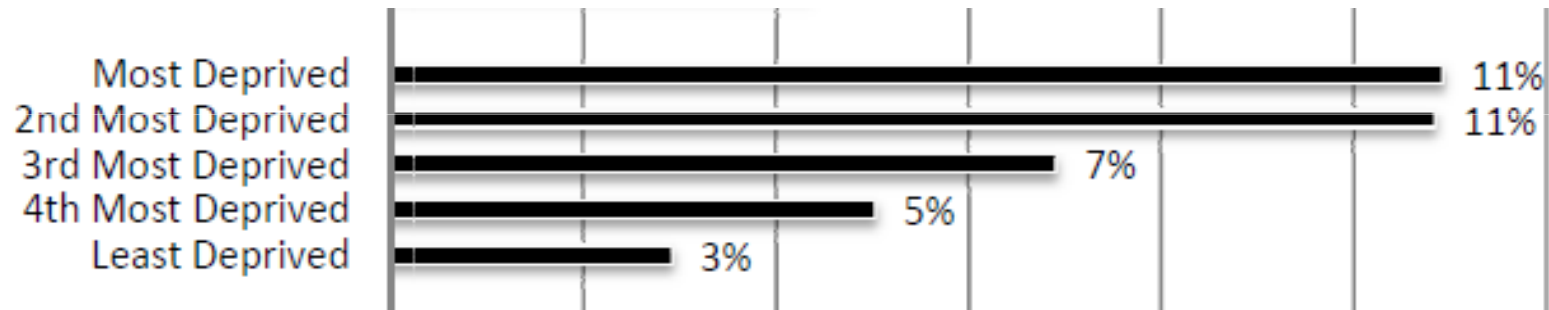
Scores were allocated based on:

- 0 = Not a problem at all
- 1 = Not a very big problem
- 2 = Fairly big problem
- 3 = Very big problem

It assesses the percentage of people who perceive a high level of ASB in their local area

Change in ASB over time (NI 17)

	2011	2012	2013
NI 17 High perception	9%	7%	7%



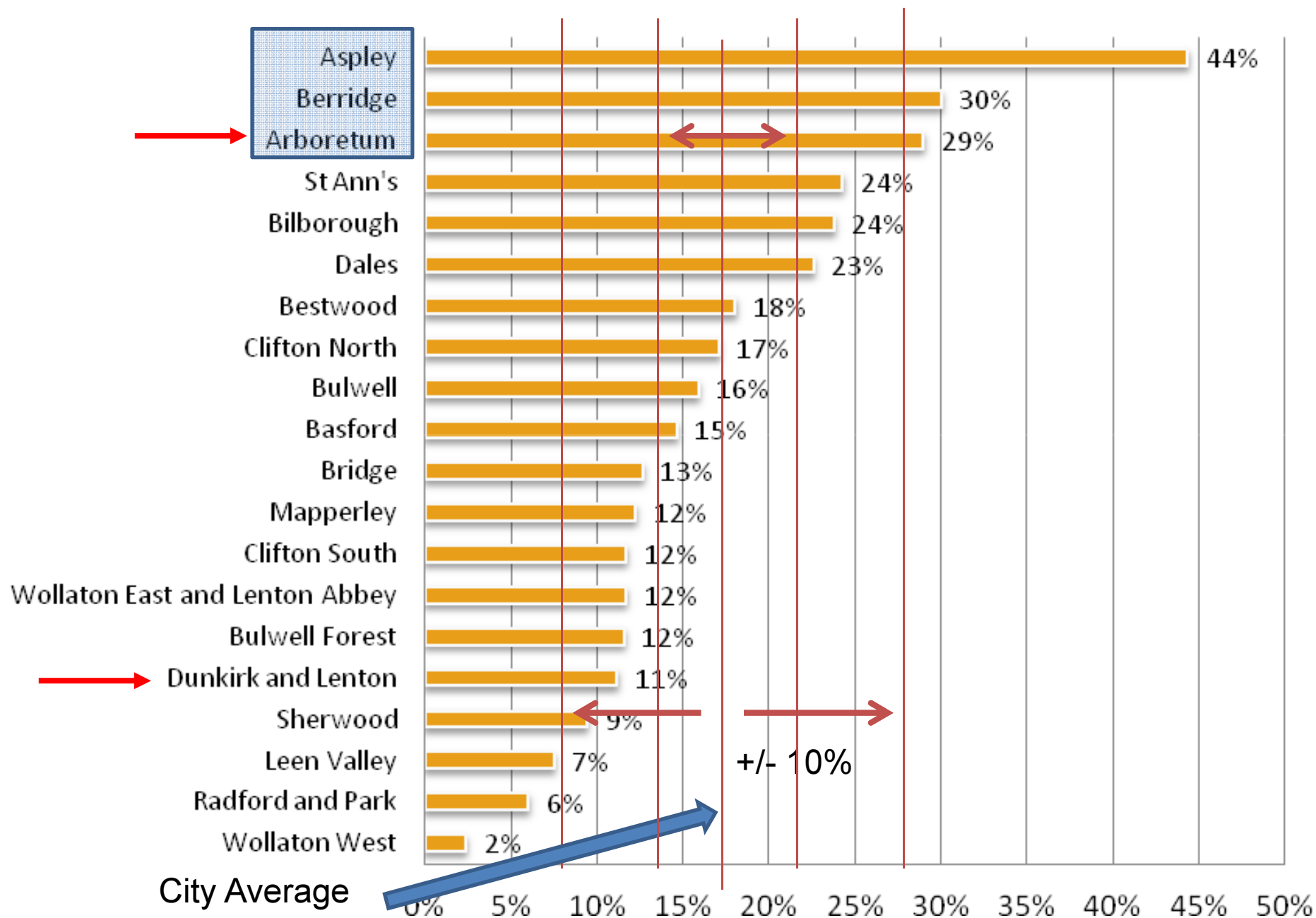
	2006	2007	2008	2009	2010	2011	2012	2013
NI 17 High perception	32%	27%	22%	19%	20%	9%	7%	7%

Change in ASB over time (Composite Score)

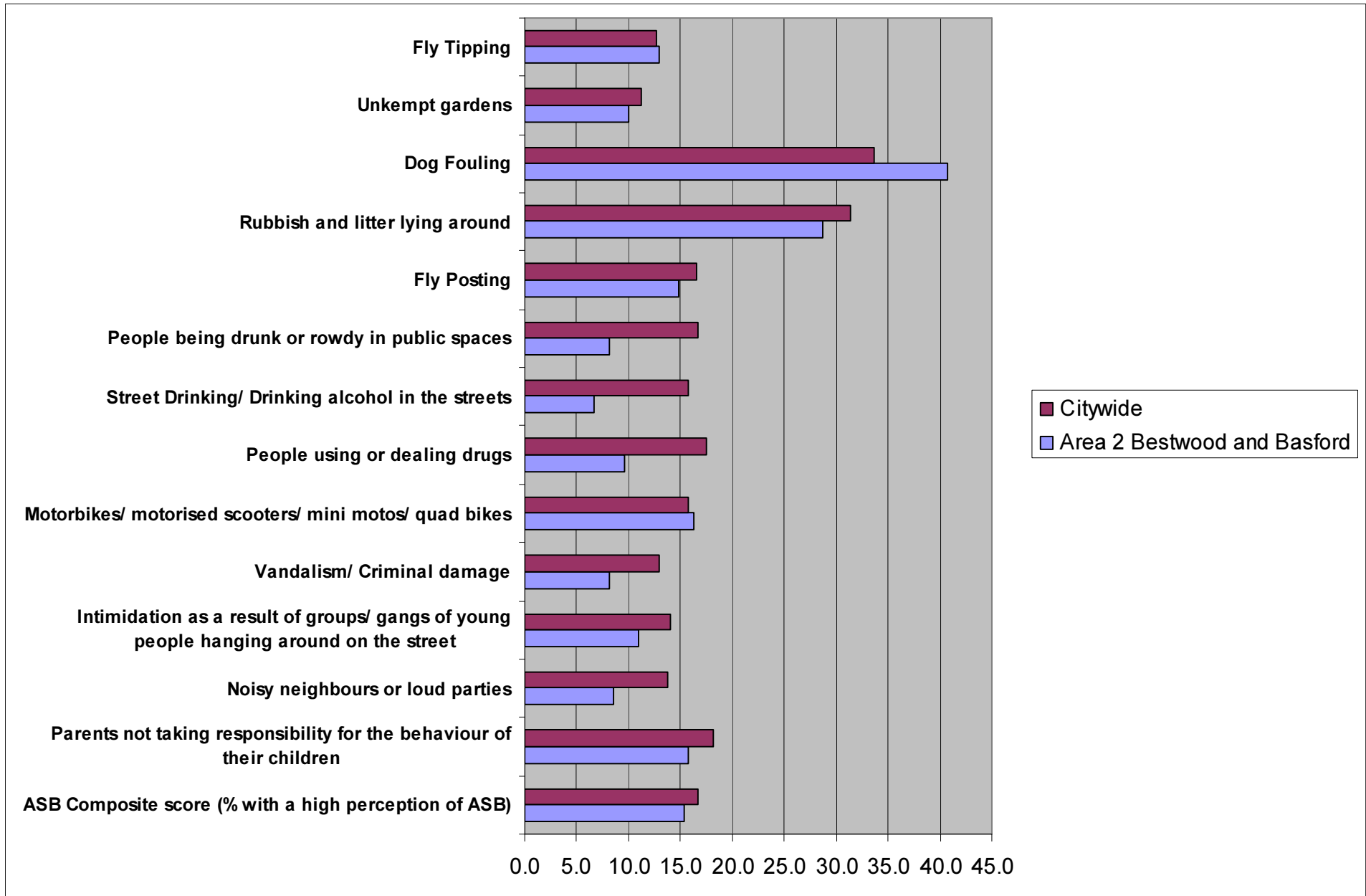
	2011	2012	2013
ASB Composite Score High perception	25%	22%	17%

Max Score = 64
+32 = high perception

High Perception of ASB (Composite) by Ward (%)



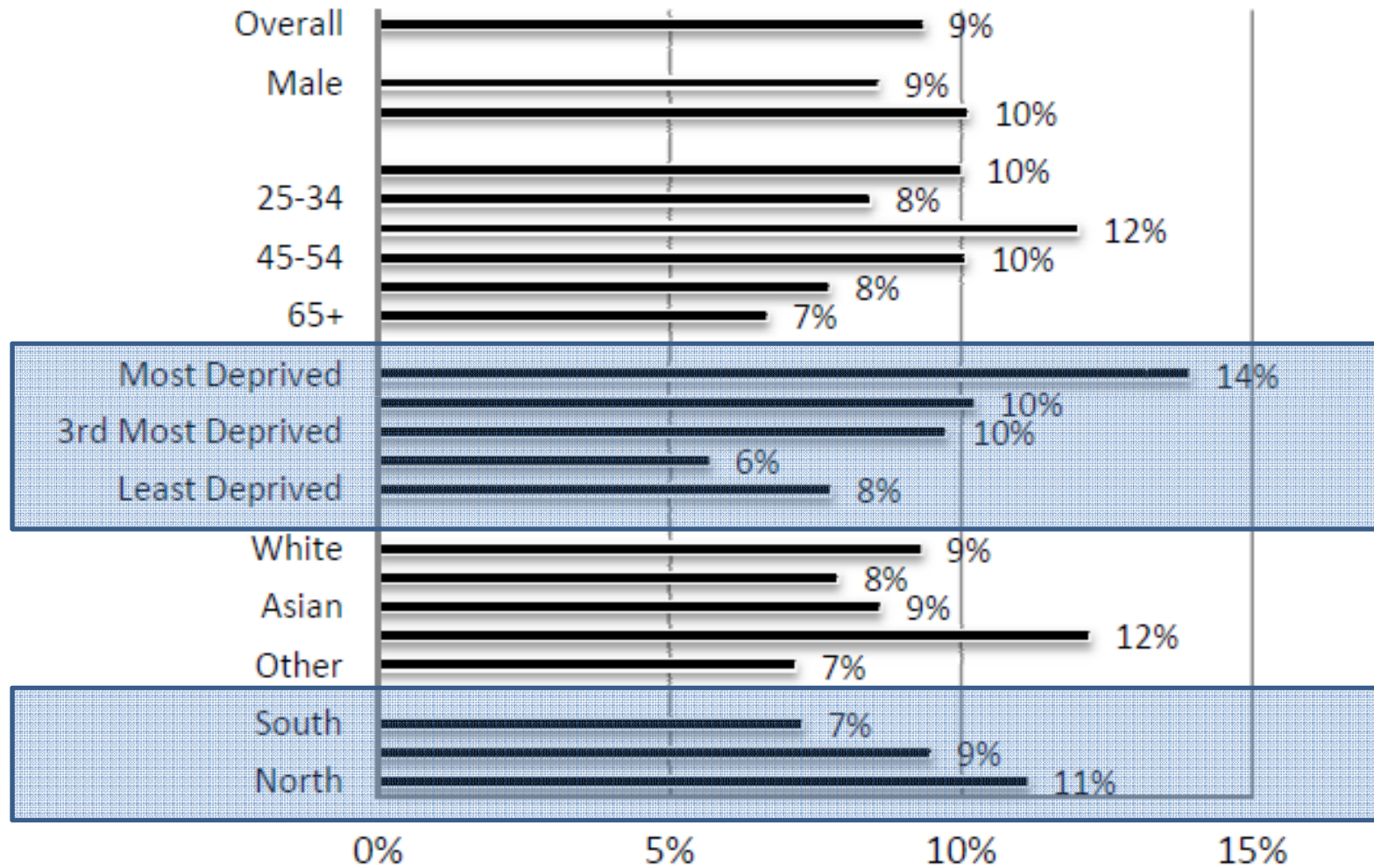
Area 2 Results Compared to City Average



Personally Targeted By ASB

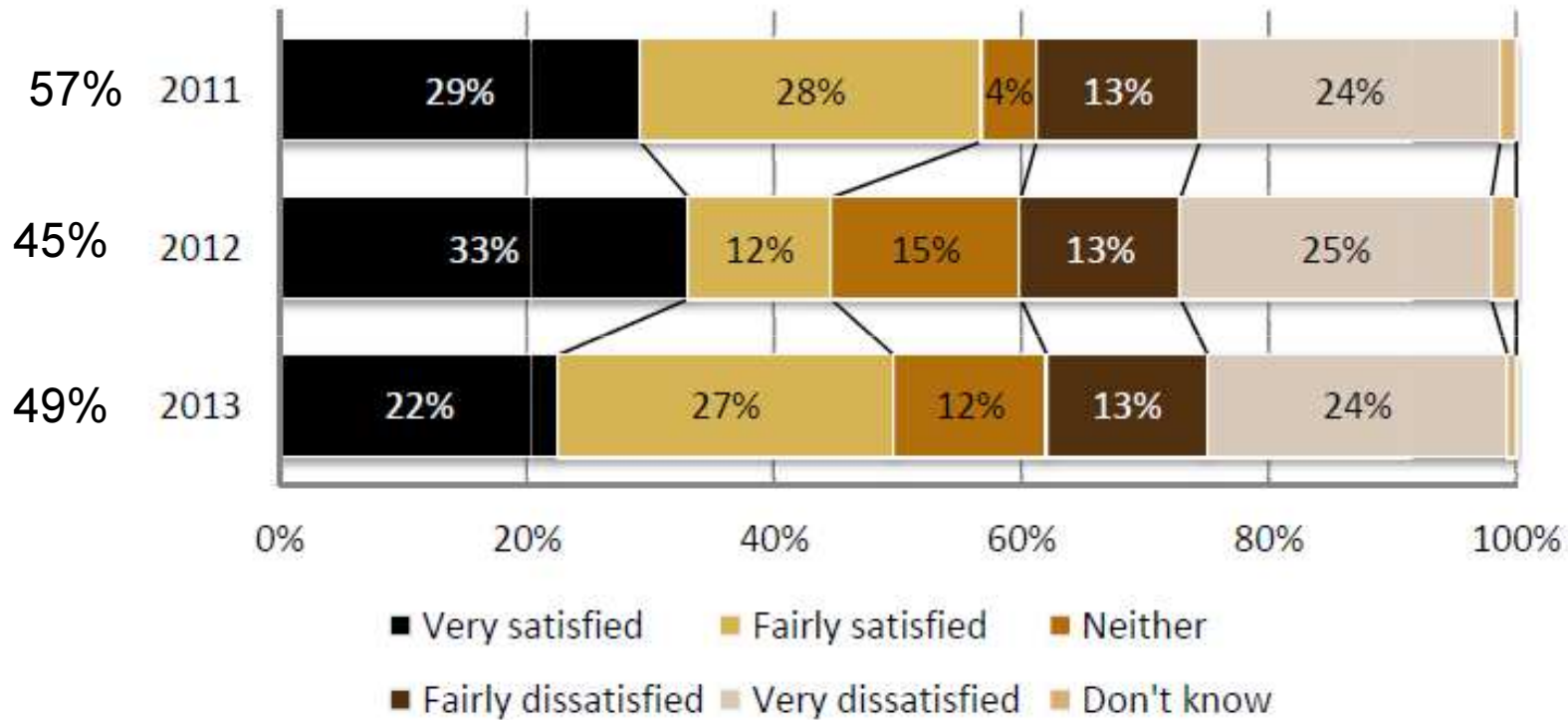
<u>2011</u>	<u>2012</u>	<u>2013</u>
13.4% of respondents reported being targeted over the last 6month	11.5%	9.4%
58% reported it	57% reported it	65% reported it

Proportion who were targeted by ASB in the last 6 months (%)



Police satisfaction

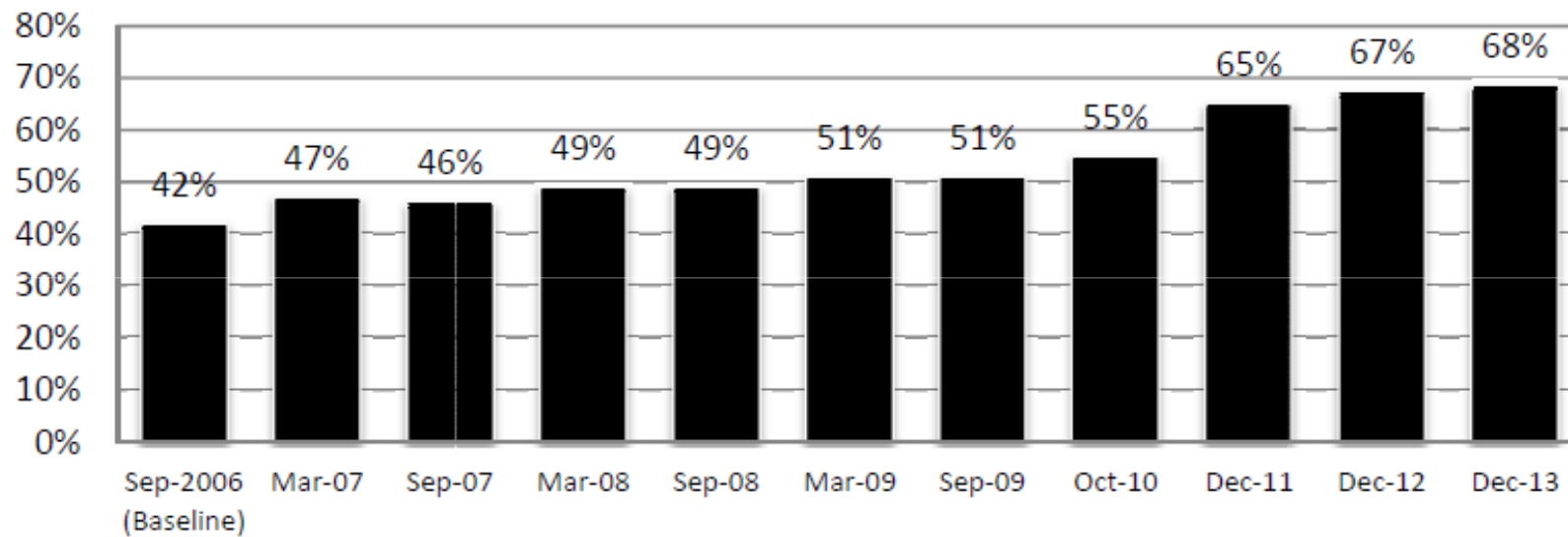
Satisfaction with Response to report of ASB (%)



Base Sizes: 2013 – 137, 2012 – 108, 2011 – 124

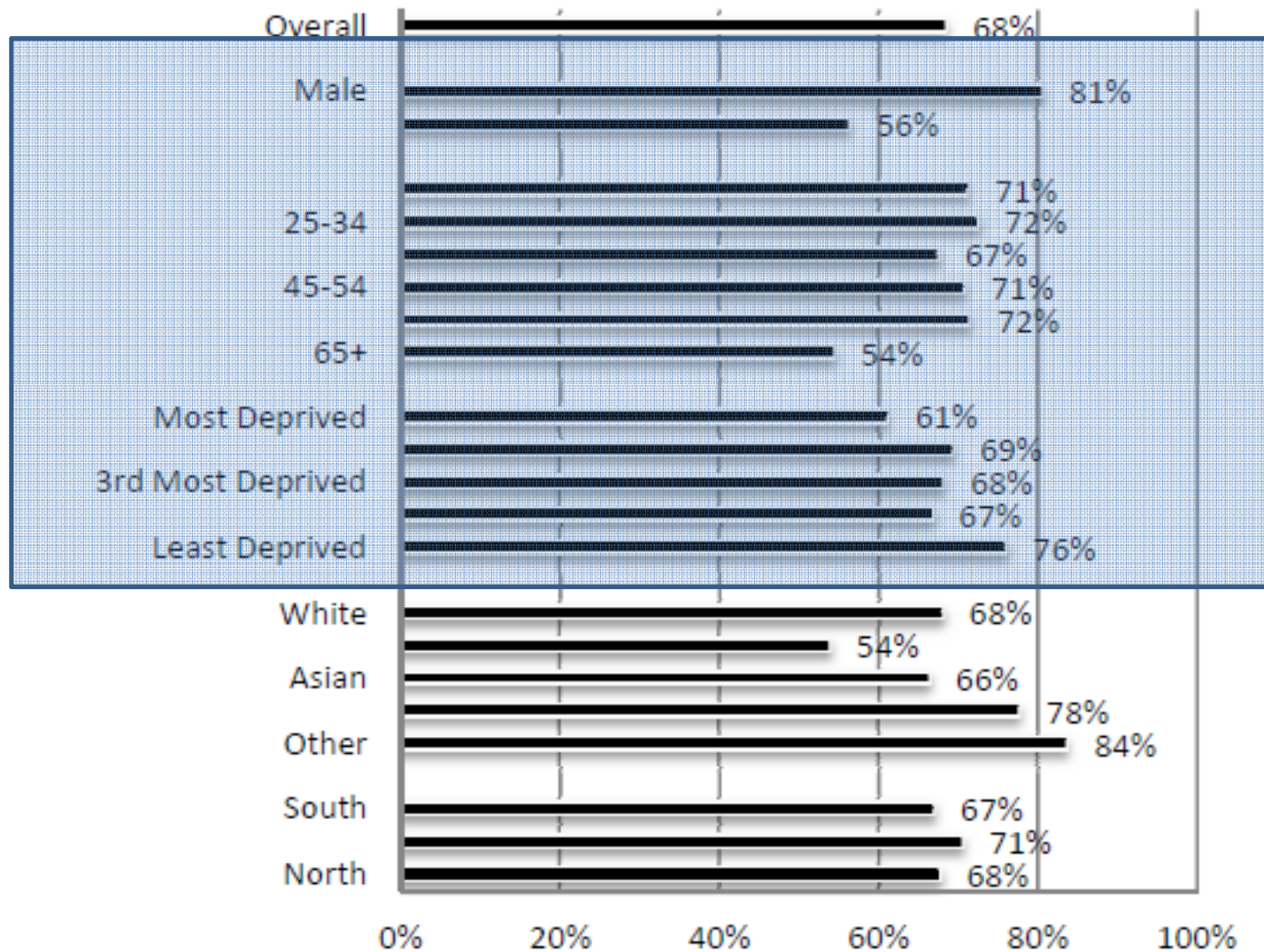
Feelings of Safety

Feelings of safety in the neighbourhood after dark (proportion who feel very or fairly safe) - (%)

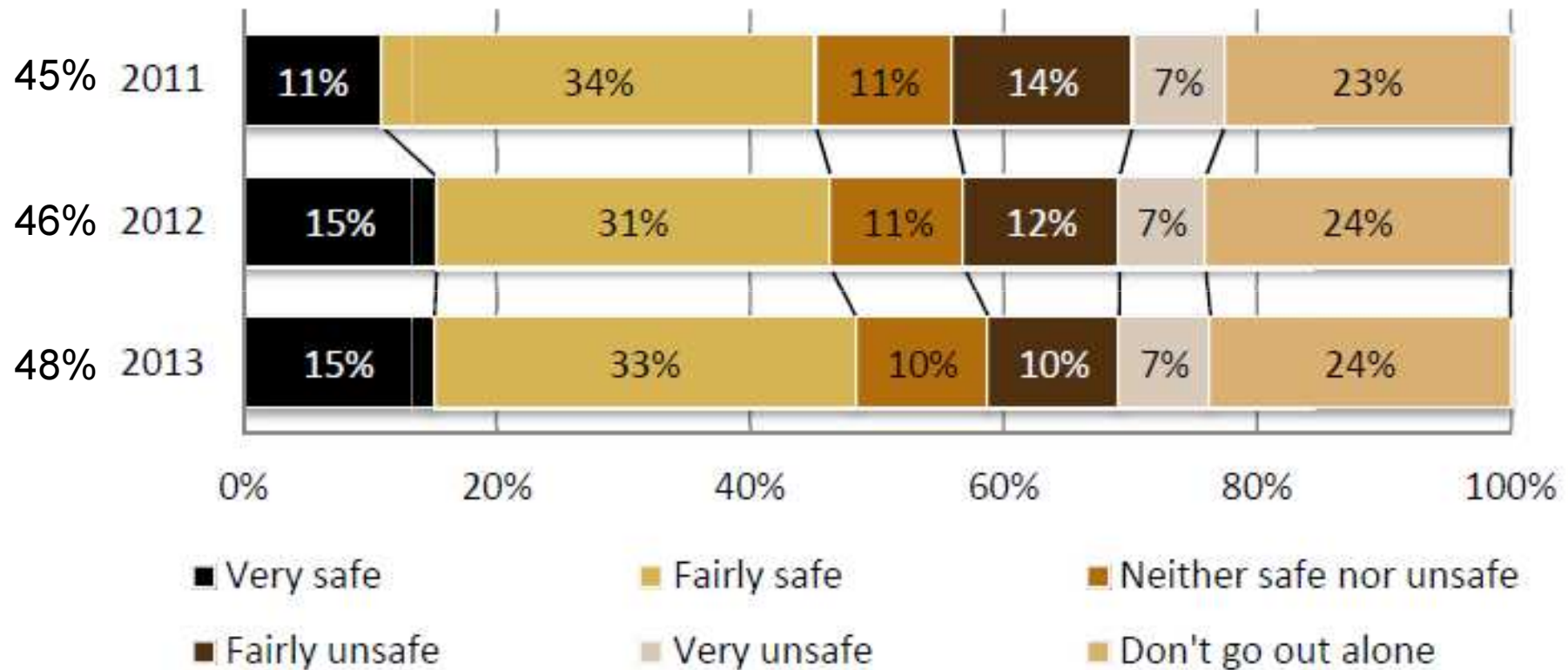


Base Size in 2013 = 2,771
2013 significantly different 2011

**Feelings of safety in local neighbourhood after dark
(very or fairly safe) - (%)**

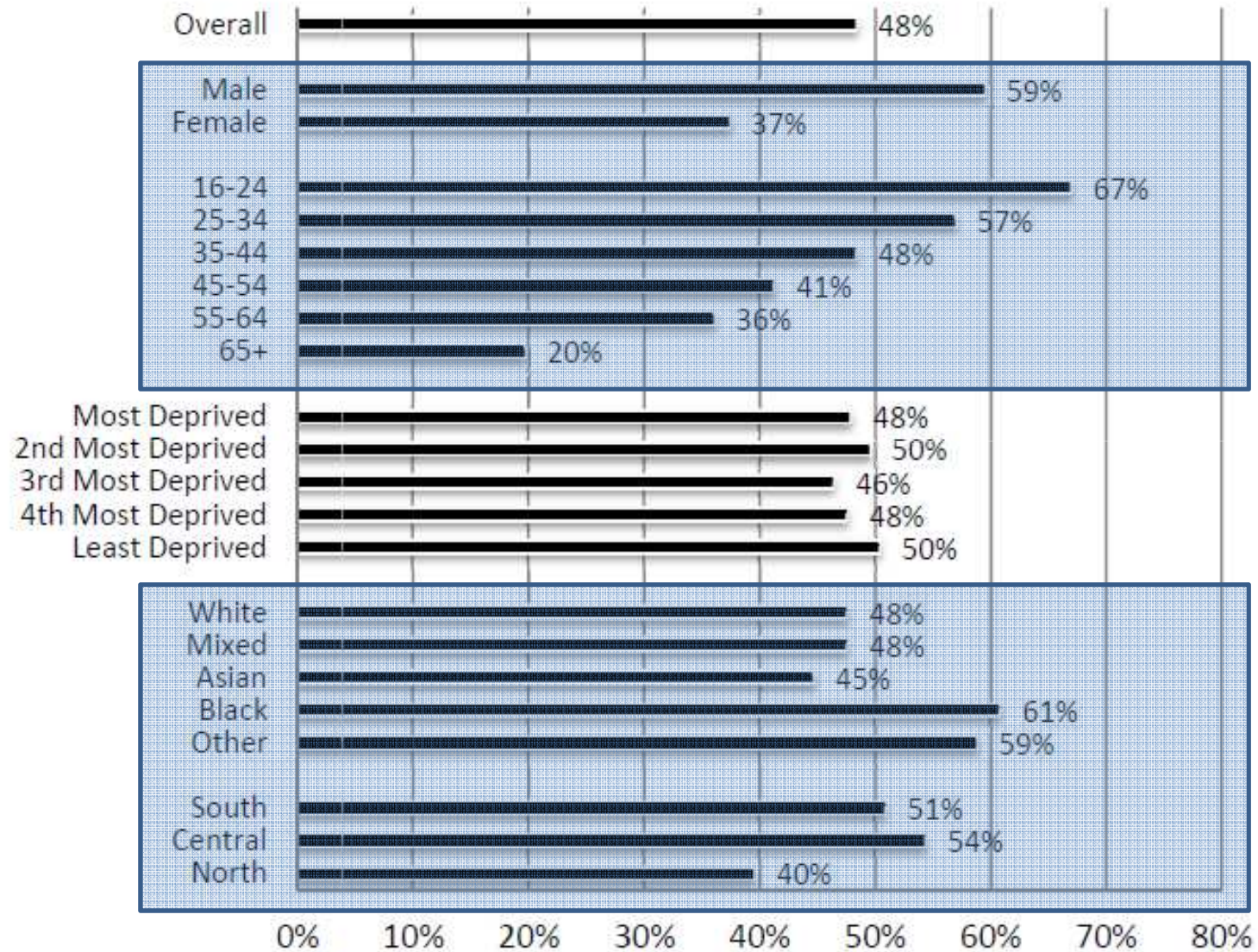


Feelings of safety in Nottingham City Centre when it's dark by Year (%)



Base Size: 2013 = 2,738, 2012 = 1,993, 2011 = 1,967
2013 significantly different 2011

Feelings of safety in Nottingham City Centre after dark (very or fairly safe) - (%)

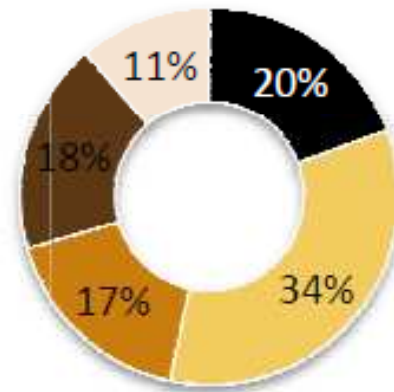


See Appendix A for Base Size
Significant differences by gender, age, ethnicity & area

Sense of Community

Sense of community

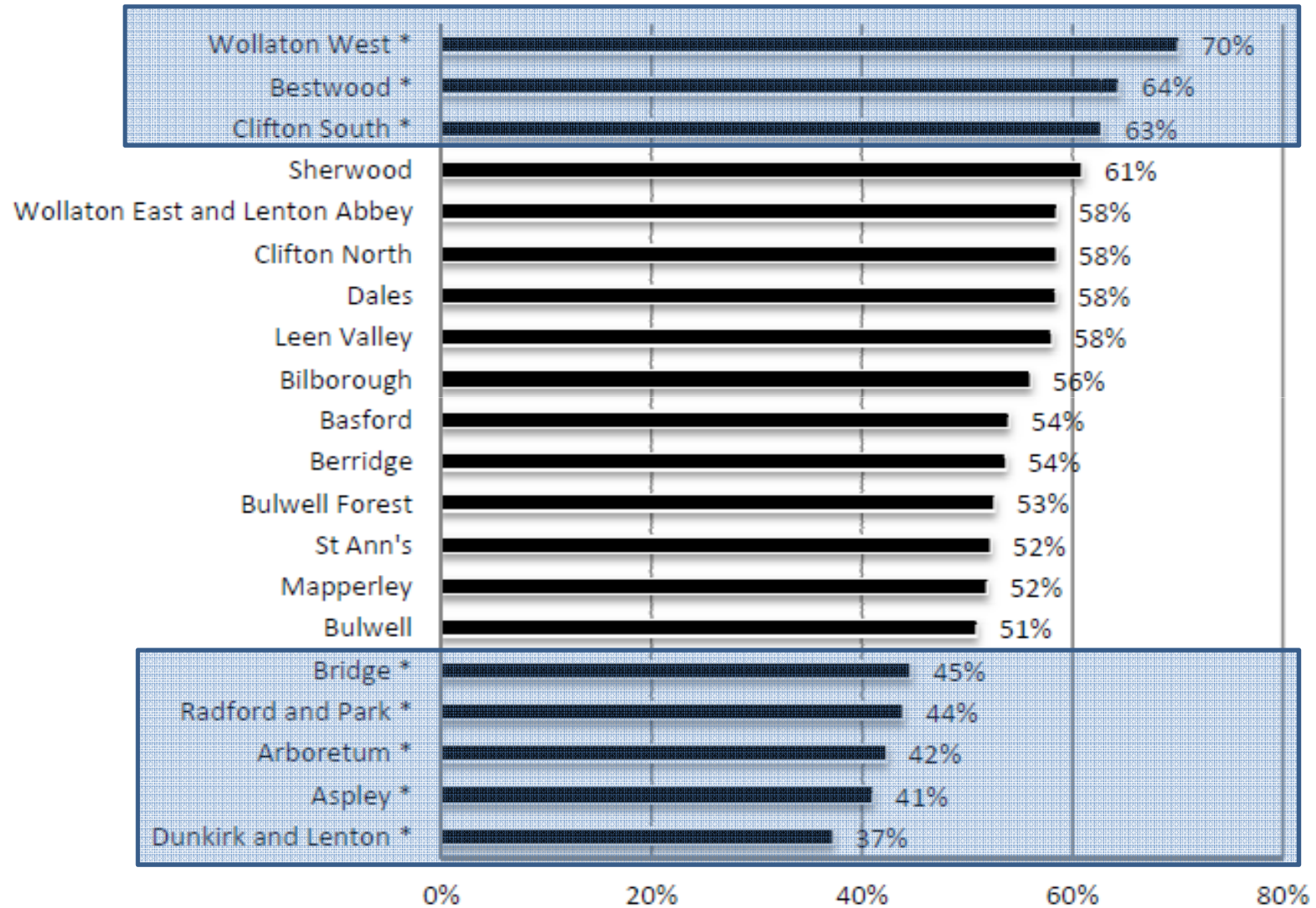
Agreement with the statement:
"There is a strong sense of community where I live" (%)



- Strongly Agree
- Tend to Agree
- Neither
- Tend to Disagree
- Strongly Disagree

Base size: 2,761

**Sense of Community by Ward
(strongly agree / tend to agree with statement) - (%)**



Satisfaction

Seeking Peoples Views and Dealing with ASB and Crime issues that matter

2011	2012	2013
48% of people felt the police and council sought their views	48%	48%
63% of people felt the police and council were dealing with the crime and ASB issues that mattered	58%	63%

Satisfaction with Cleanliness

ASB Survey

80% of people satisfied
with local area

78% city centre

Citizens Survey

74%

80%

Other Measures

Other Measures

Those involved in formal volunteering fell from 13% to 10% (remained the same)

Those helping out (less formal volunteering) fell from 18% to 11% (remained the same)

Awareness of community payback 30% in 2011 to 27% in 2013

Perceptions of Crime

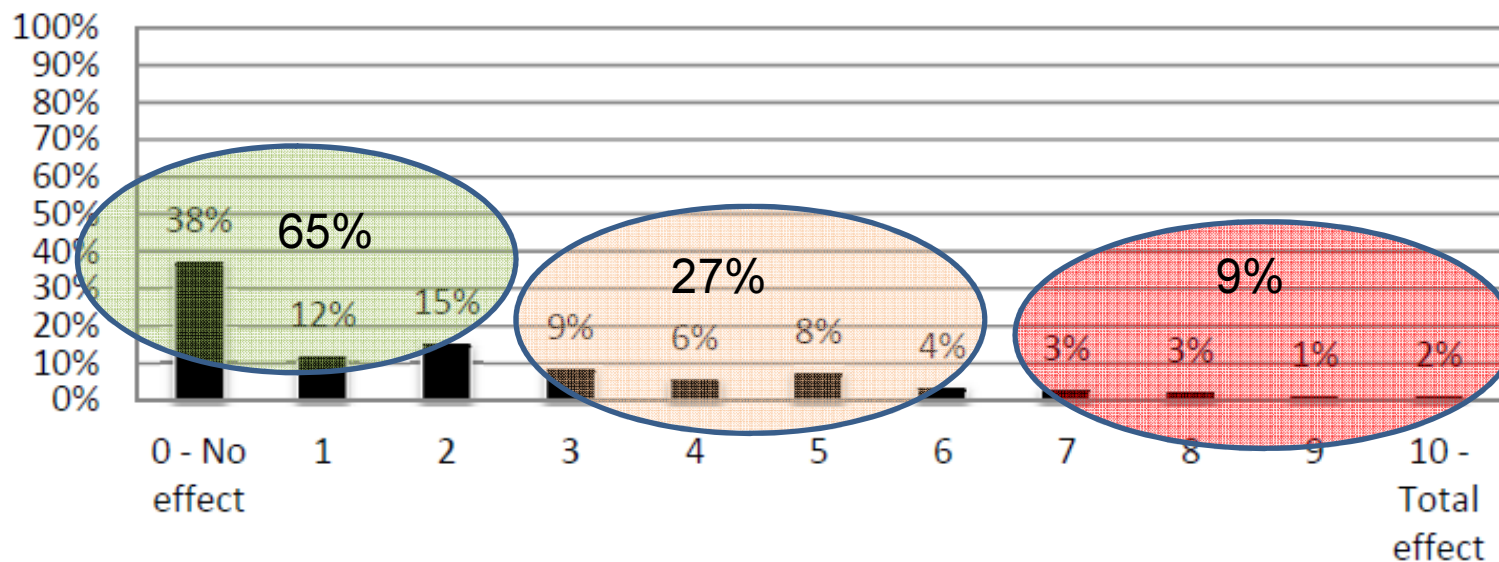
Perceptions of Crime

- How much is your quality of life affected by crime? (scale of 0 to 10)

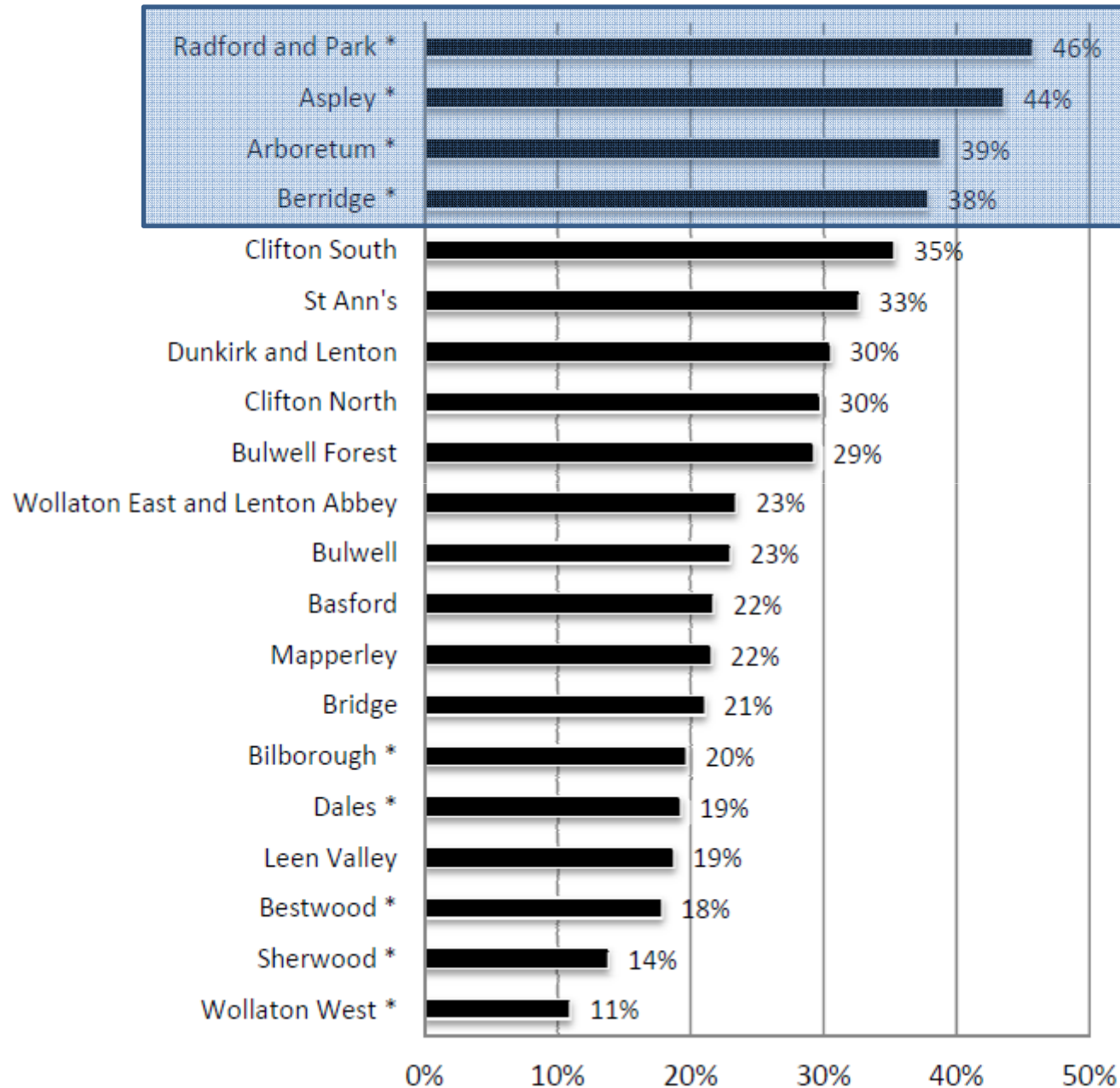
=38% not at all

=9% (7 or more)

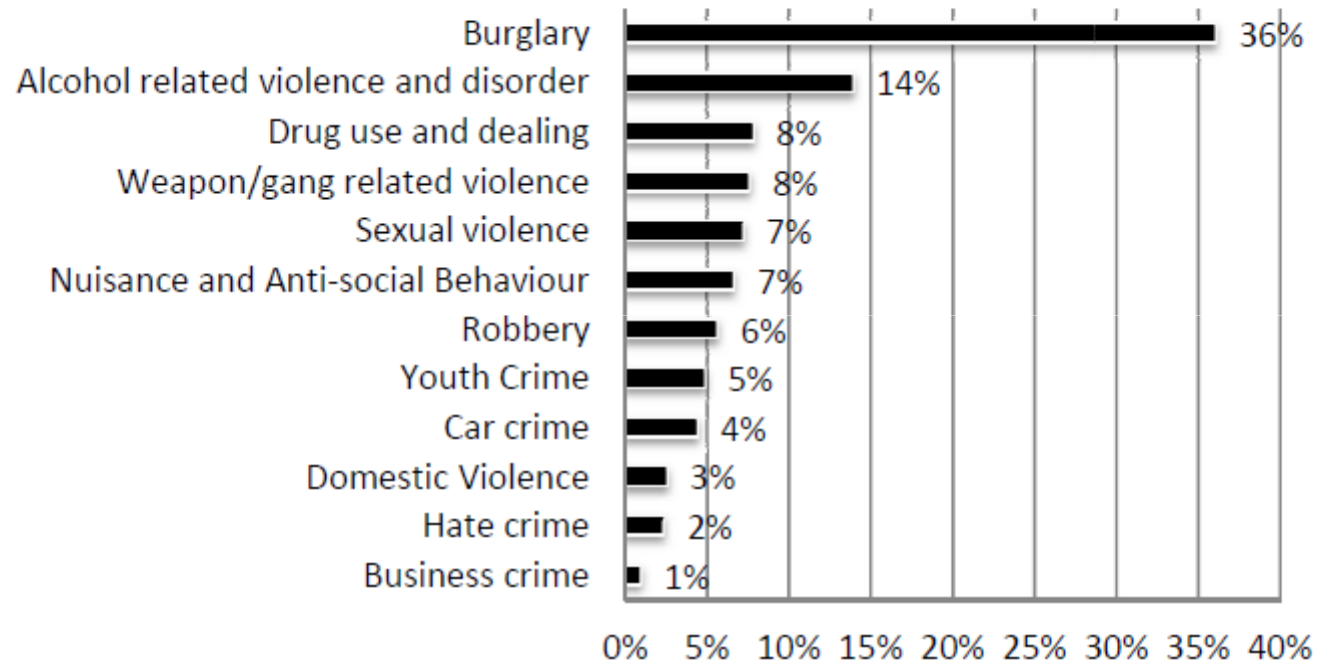
How much is your own quality of life affected by crime? (%)



How much of a problem if at all do you think crime is in your local area? (very & quite big problem) (%)

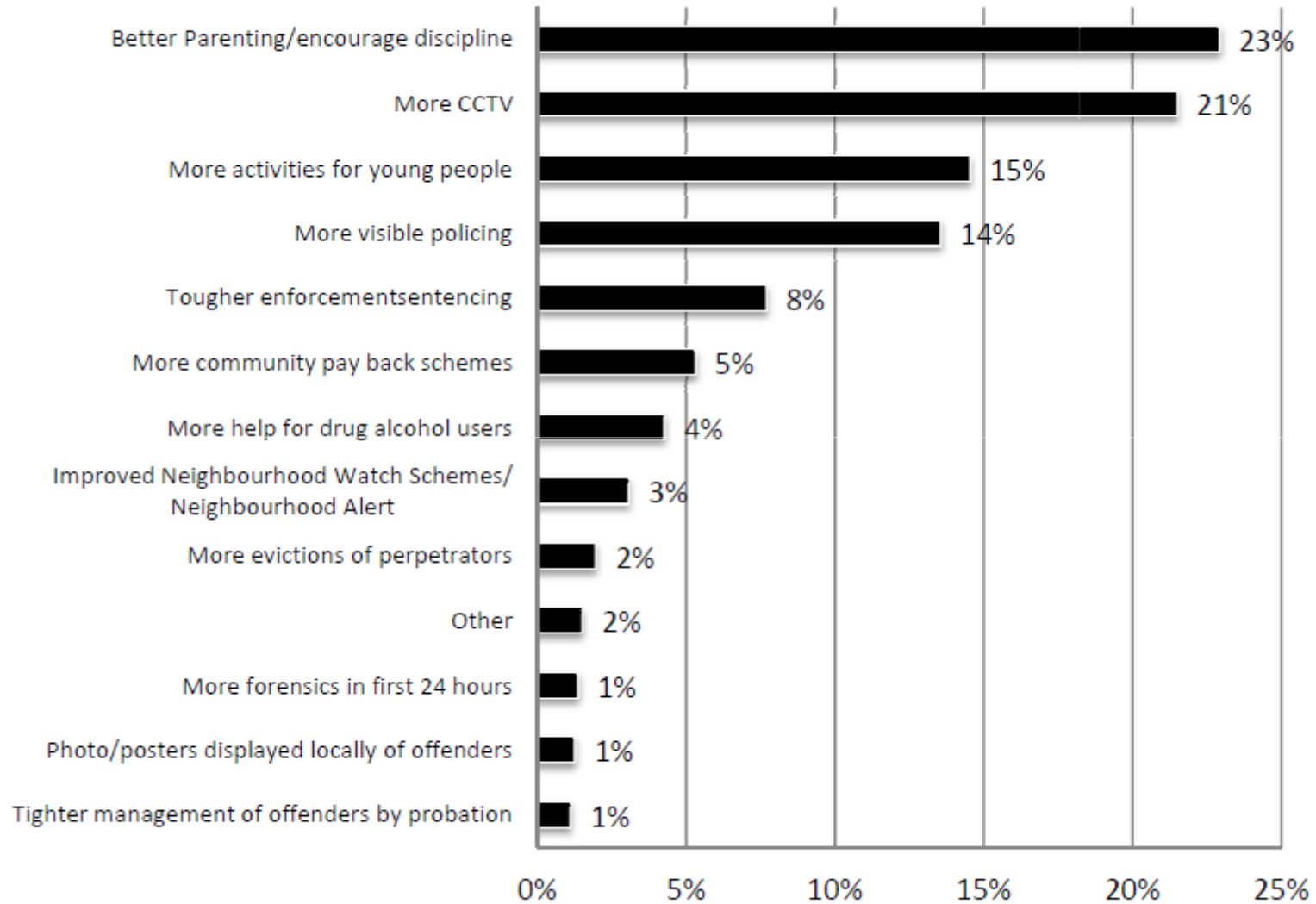


Crime and Community Safety Issues - Ranked 1st (%)



Base Size: 2,548

Ways to Reduce Crime and Anti-Social Behaviour - Ranked 1st (%)



Base Size: 2,682

Summary

- Perceptions of ASB continue to improve
- Almost all types of ASB have seen an improvement
- People feel safer
- Confidence in the Police and Council remains high
- Sense of community and volunteering is deteriorating
- Arboretum has some clear issues
- Aspley also a problem

The full survey results can be viewed at

<http://www.nottinghamcdp.com/assets/content/documents/Respect%20for%20Nottingham%20Survey%202013%20-%20Final%20Report.pdf>

If you have any questions, please contact:

Najeeb Nazir, Community Safety Officer, North Locality

Tel: 0115 8762174

Email: *najeeb.nazir@nottinghamcity.gov.uk*